

## MATRIX Heavy Duty Descaler



Legend Matrix is a fast-acting versatile rust and limescale remover. It contains powerful acids that can remove the heaviest of contaminants. Matrix is especially effective on brickwork, concrete and paving slabs, it will remove efflorescence and other staining from the exposed surfaces. Matrix can also be used to etch concrete prior to painting.

Pack size: 2x5L Code: LEGM-AM0080-2NEX  
25L Code: LEGM-AM0081

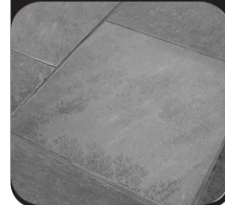
Urinals



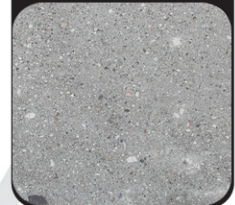
Brickwork



Paving



Concrete



### How To Use

For Best Results:

**Do not use Matrix without first diluting with water.**

Dilution Rates:

**For general cleaning, floor etching, limescale and rust removal.**

Dilute up to 5:1 with water

**For heavy scale removal.**

Dilute up to 3:1 with water

**Concrete slabs:** Pour the diluted solution onto the concrete slabs and use a stiff broom to clean the surface. Rinse off with clean water.

**Brickwork:** Brush on the diluted solution and work into the surface. Rinse off with clean water.

**Urinals:** Close the toilet to the public. Open windows and doors to allow sufficient ventilation. Pour the diluted solution directly into the down pipe of the urinal. Be careful not to spill any Matrix onto stainless steel surfaces. Allow Matrix to stand in the pipe for up to 10 minutes before flushing with clean water.

**Limescale:** Apply using a brush, or if item is small enough it may be immersed in the diluted solution. Rinse off thoroughly with clean water.

**Rust Removal:** Brush the diluted solution onto the surface, allow sufficient contact time for Matrix to dissolve the rust then immediately protect the surface to prevent atmospheric corrosion.

**DO NOT USE ON STAINLESS STEEL OR NON-FERROUS METAL SURFACES**

#### HEALTH & SAFETY

Please refer to the MSDS for full health and safety information.

DO NOT INGEST

DO NOT MIX WITH OTHER CHEMICALS

KEEP OUT OF REACH OF CHILDREN