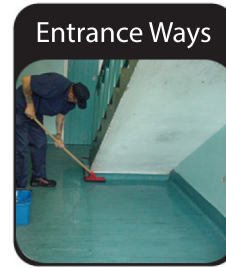
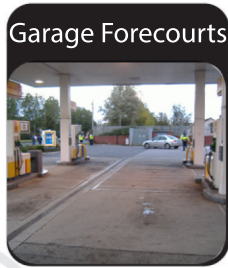


DEEPFRESH Heavy Duty Floor Cleaner



Legend Deepfresh is a versatile heavy duty floor cleaner that has been specially formulated to remove the heavy build-up of grease, oil and general grime from all hard floor surfaces. Deepfresh is ideal for removing rubber scuff and tyre marks from busy areas such as garage forecourts, factory floors and bus flooring. It leaves an anti-static finish. Deepfresh can be applied by spray, mop or machine and is safe to use on vinyl, thermoplastic, rubber, concrete, tile, Altro, stainless steel and composite floor surfaces. Can be used with hot or cold water.

Pack size: 4x5L Code: LEGM-AD0120-4NX5
2x5L Code: LEGM-AD0120-2NX5



How To Use

For spot cleaning use the product neat.

Dilute at a rate of 200ml to 5L water for heavy duty cleaning with a mop & bucket.

Dilute at a rate of 100ml to 5L water when applying with a cleaning machine.

GARAGE FORECOURTS

 1 SWEEP FLOOR TO REMOVE DUST & DEBRIS	 2 DILUTE 200ml TO 5L OF WATER	 3 POUR SOLUTION ONTO THE FLOOR	 4 USE DECK SCRUBBER RINSE OFF WITH PRESSURE WASHER
---	---	--	--

MACHINE CLEANING

 5 DILUTE 100ML TO 5L WATER ADD SOLUTION TO MACHINE	 6 MACHINE SCRUB ACROSS THE FLOOR WITH THE VACUUM OFF	 7 ON THE SECOND PASS SWITCH THE VACUUM ON TO PICK UP RESIDUES	 8 ALLOW TO AIR DRY BEFORE OPENING TO TRAFFIC
--	--	---	--

SPOT CLEANING

SPOT CLEANING: APPLY NEAT TO CLOTH	 1	 2 USE WHITE NON-SCRATCH SCOURER TO REMOVE RUBBER MARKS
---------------------------------------	--------------	--

Always wear protective gloves, protective clothing, eye and face protection when handling this product.

HEALTH & SAFETY

Please refer to the MSDS for full health and safety information.



DO NOT INGEST
DO NOT MIX WITH OTHER CHEMICALS
KEEP OUT OF REACH OF CHILDREN



Wear protective clothing, eye, and face protection.

